

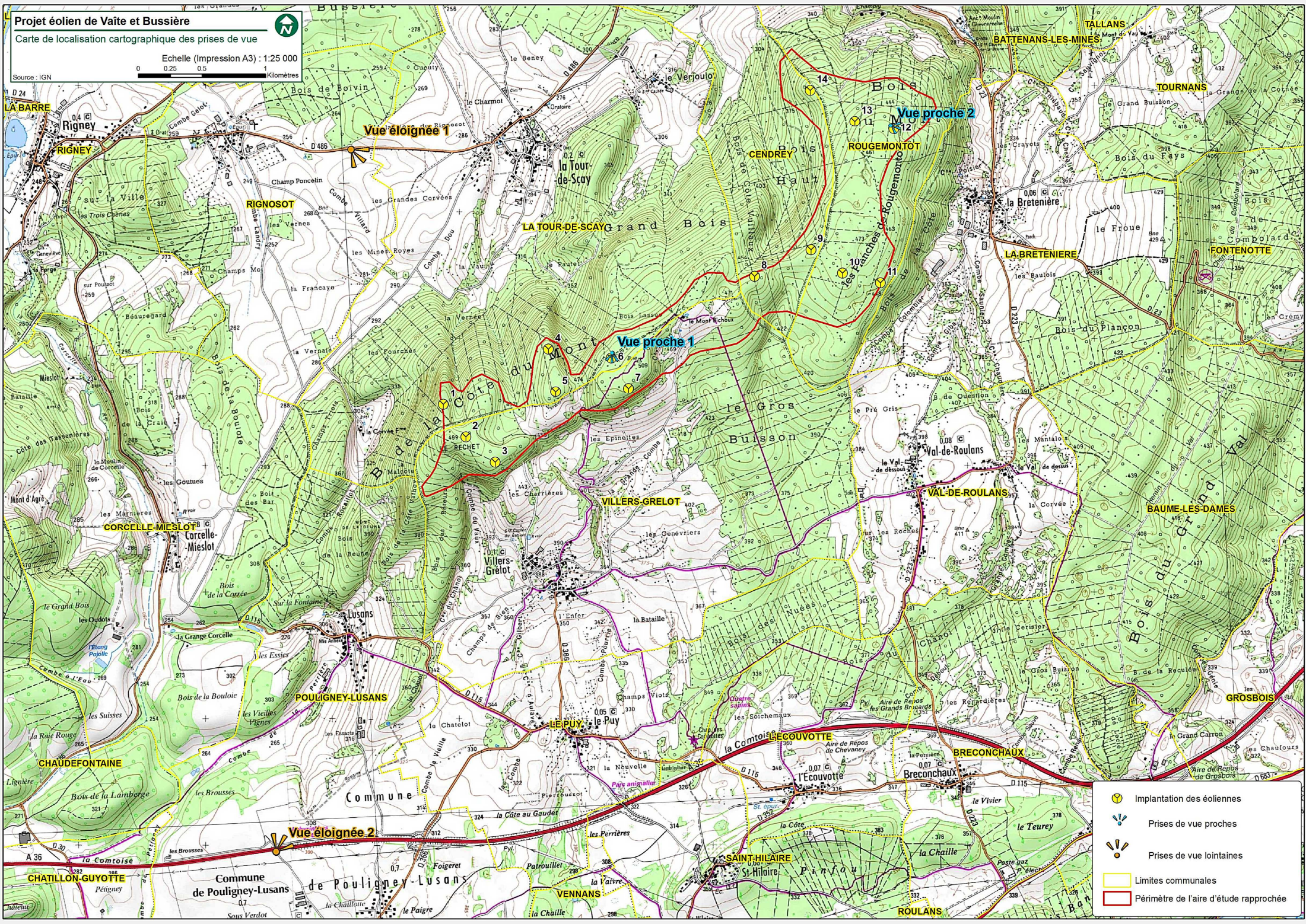
# Projet éolien de Vaite et Bussièrre






Carte de localisation cartographique des prises de vue

Echelle (Impression A3) : 1:25 000

0 0,25 0,5 Kilomètres

Source : IGN



-  Implantation des éoliennes
-  Prises de vue proches
-  Prises de vue lointaines
-  Limites communales
-  Périmètre de l'aire d'étude rapprochée